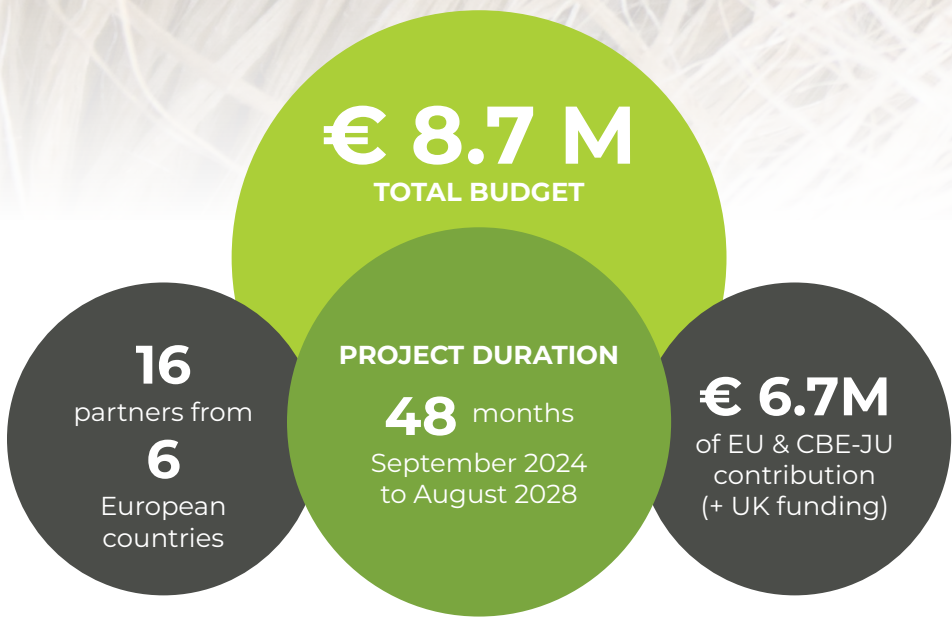




FROM **HEMP FIELDS** AND **BIO-BASED** RESIN PRECURSORS TO **FULLY BIO-BASED COMPOSITES** AND **BEYOND!**



THE SSUCHY-NEXT PROJECT AIMS AT DEVELOPING THE SUPPLY CHAINS FOR INDUSTRIAL HEMP FIBRE AND BIO-BASED RESINS TOWARDS HIGH PERFORMANCE CIRCULAR BIO-BASED COMPOSITES.

HEMP FIELDS

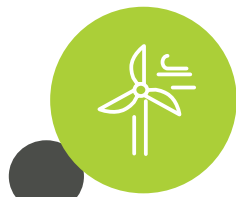
LIGNOCELLULOSIC BIOMASS

Hemp characterisation and initial processing

Bio-based resins production

Fully bio-based high-performance composites

Integration in various environmentally sound industrial applications



WIND ENERGY



CONSTRUCTION



Feedstock sourcing and initial processing (Hemp fibre)	
Initial processing (Bio-based resins)	
Integration in applications and prototypes developments	
Materials developments, recycling, LCA	
Stakeholders' engagement and market uptakes	

SSUCHY-NEXT.EU

@SSUCHY-Next
 SSUCHY-Next



This project has received funding from the Circular Bio-based Europe Joint Undertaking (CBE JU) under grant agreement No 101157517. The JU receives support from the European Union Horizon Europe research and innovation programme and the Bio Based Industries Consortium.

Graphic design : www.links-web.fr